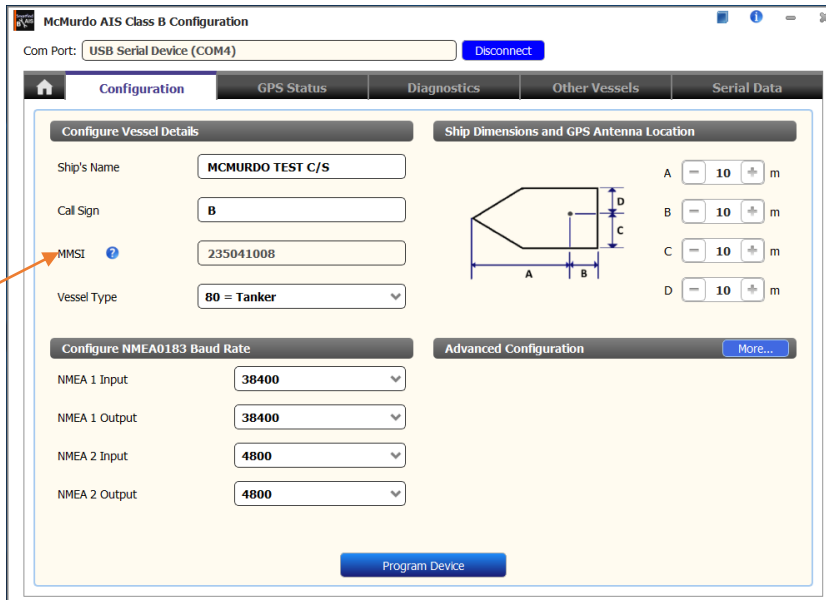
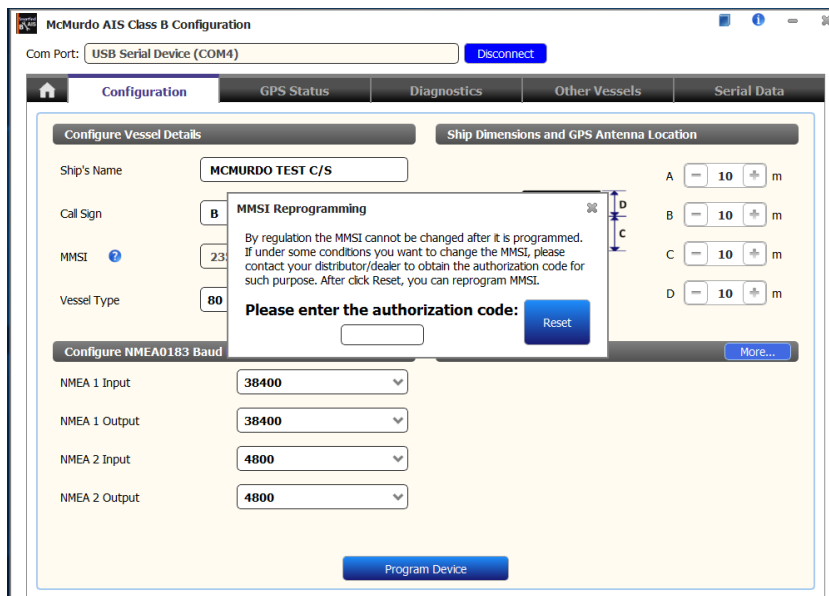


You will need to use the configuration software that comes with the M10 to connect to the M10/M10W after connecting to your M10 you will need to click on the configuration TAB then double LEFT click on MMSI letters “not the numbers” (**this can take several fast-double clicks to open**) this will open a new window where you will enter the code.



enter the code that was sent to you by the engineer and click Reset.



NOTE: Only change the MMSI number at this point.

After the reset, back space the old MMSI number then enter your new MMSI number then click program device and save settings. Now disconnect the power and the USB then reconnect the power and the USB then connect the software to your M10, now you can make any other changes you require.